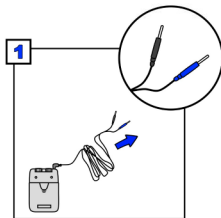
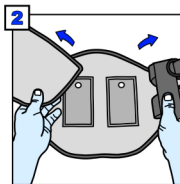


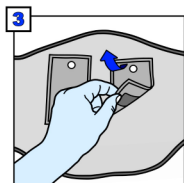
To begin operation of your conductive garment and/or cloth electrodes, please refer to the manufacturer's instructions for use. This Quick Start Guide is an educational aid only. It is not intended as medical advice for individual conditions or treatments. If you have questions regarding the operation of your conductive garment and/or cloth electrodes, replacement cloth electrodes, or warranty information, please call us toll-free at 1-800-456-1971.



1 Extend lead wire with pins from T.E.N.S. unit.



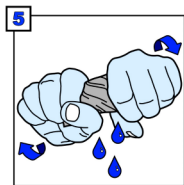
2 Open garment and locate cloth electrodes.



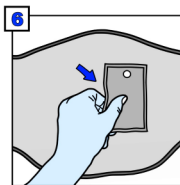
3 Remove cloth electrodes from garment.



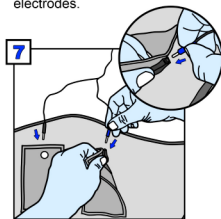
4 Wet cloth electrodes with water until fully dampened.



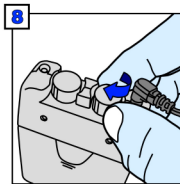
5 Gently wring out cloth electrodes.



6 Return cloth electrodes to garment with velcro.



7 Insert lead wire pins into snap adapters on underside of cloth electrodes.

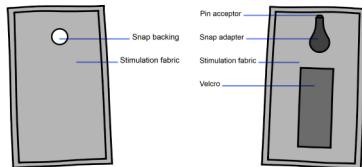
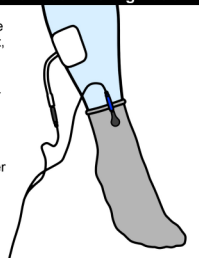


8 Power on and use T.E.N.S. device as directed.

- LSO Brace
- Full Back
- 7" Support
- 9.5" Support
- Sock
- Glove
- Knee
- Elbow

Sock, Glove, Knee and Elbow Configuration

To use your Sock, Glove, Knee or Elbow Garment, start by wetting the garment until fully saturated and wring out. Then simply insert one pin into a Polysytim II electrode, included with your unit, and the other pin into the snap adapter located on the garment. Power on and use your T.E.N.S. device as directed.



Conductive Garment Electrodes

Helpful Hints

- Make sure cloth electrodes are completely dampened with water before wringing out.
- When wringing out, do so to remove excess water, cloth electrodes should remain damp.
- Electrolyte spray may be used in place of water for improved ion transfer.
- Red and black pins are interchangeable and may be inserted in either cloth electrode.*
- For care and cleaning of cloth electrodes or garment, please refer to manufacturer's instructions.

*Ground electrode may be required with certain garments, e.g. stim sock.



Medical Science Products, Inc.

517 Elm Ridge Avenue
P.O. Box 381
Canal Fulton, OH 44614-0381

Phone: 1-800-456-1971

Fax: 1-330-854-1953

Web: www.medicencepro.com

Email: info@medicencepro.com